

Interplay of Laser-Plasma Interactions and Inertial Fusion Hydrodynamics

D. J. Strozzi,^{*} D. S. Bailey, P. Michel, L. Divol, S. M. Sepke, G. D. Kerbel, C. A. Thomas, J. E. Ralph, J. D. Moody, and M. B. Schneider

Lawrence Livermore National Laboratory, Livermore, California 94551, USA

(Received 18 July 2016; revised manuscript received 5 October 2016; published 12 January 2017)

The effects of laser-plasma interactions (LPI) on the dynamics of inertial confinement fusion hohlraums are investigated via a new approach that self-consistently couples reduced LPI models into radiation-hydrodynamics numerical codes. The interplay between hydrodynamics and LPI—specifically stimulated Raman scatter and crossed-beam energy transfer (CBET)—mostly occurs via momentum and energy deposition into Langmuir and ion acoustic waves. This spatially redistributes energy coupling to the target, which affects the background plasma conditions and thus, modifies laser propagation. This model shows reduced CBET and significant laser energy depletion by Langmuir waves, which reduce the discrepancy between modeling and data from hohlraum experiments on wall x-ray emission and capsule implosion shape.

DOI: 10.1103/PhysRevLett.118.025002

Interaction of a large-amplitude wave with other waves and background plasma is ubiquitous in plasma physics. Magnetic fusion devices rely on heating and current drive by externally launched rf, e.g., microwaves [1]. Their parametric decay has been studied since the 1970s [2]. Space plasmas show important interplay of waves and energetic particles, and ionosphere modification experiments by radar transmitters have shown anomalous absorption by decay into Langmuir waves (LWs) [3]. This Letter focuses on laboratory laser-plasma interactions (LPI), specifically in inertial confinement fusion (ICF), but is also relevant to parametric amplifier [4] and beam-combining schemes.

ICF entails compressing thermonuclear fuel (namely deuterium and tritium) to 1000 g/cm^3 and $\sim 10 \text{ keV}$ temperature. Most research uses lasers to implode a low- Z capsule either by direct illumination, or with x rays produced by heating a high- Z cylindrical hohlraum (indirect drive). Besides its energy-source potential, ICF produces extreme fusion-product fluxes for basic science studies. Hohlraums are also used to study material properties like opacity. Hohlraum experiments have been conducted at the National Ignition Facility (NIF) from 2009 to the present [5]. Targets with laser pulses $\gtrsim 10 \text{ ns}$ use high-density hohlraum gas fills $\gtrsim 0.9 \text{ mg/cm}^3$, typically helium, to tamp high- Z wall expansion.

Laser-plasma interactions are a key aspect of these experiments, as sketched in Fig. 1. Crossed-beam energy transfer from the outer cones of laser beams (angles to hohlraum axis $\theta = 44.5^\circ$ and 50°) to inner cones ($\theta = 23.5^\circ$ and 30°) is needed to control implosion symmetry [6]. CBET is a form of stimulated Brillouin scatter where two light waves beat to drive an ion acoustic wave (IAW), which transfers energy to the light wave with lower frequency in the plasma frame [7]. Shots with high fill density have high inner-beam backward stimulated Raman scatter (SRS) or decay of a laser into a

scattered light wave and LW. This is detrimental since the scattered light does not produce x rays, and the LW decays to superthermal electrons, which can preheat the fuel and reduce compression. The LW energy stays in the target, but is spatially redistributed. This alters symmetry of the x-ray drive and resulting implosion.

LPI processes [8] have temporal growth rates (1–10 ps) and spatial gain lengths (\sim speckle length in smoothed beams, $\sim 160 \mu\text{m}$ on NIF) much smaller than hydrodynamic scales. Full LPI modeling therefore requires much more detailed and costly tools than radiation-hydrodynamics codes, such as paraxial-propagation [9] or particle-in-cell codes [10]. Including LPI effects in rad-hydro codes is challenging: coupling a paraxial and rad-hydro model has been done, but is usually impractical on current computers [11]. CBET calculations either postprocess plasma conditions from a hydro simulation with no CBET [6,12] or are directly implemented “inline” in simulations that describe

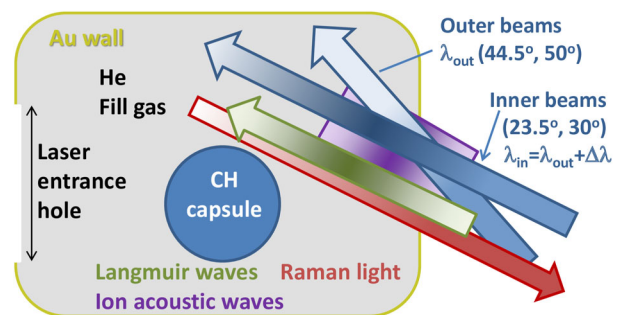


FIG. 1. Sketch of hohlraum LPI. Arrows give wave propagation direction, and color darkness indicates intensity. Outer beams transfer power to inner beams where they overlap. SRS light from inner beams grows continuously along path, with little absorption. Langmuir waves are driven by beating of inner-beam laser and SRS light.

lasers with ray-tracing [13,14] or paraxial-complex geometric optics [15]. SRS is usually treated by removing the escaping light from the incident laser, though recent work has included SRS-produced superthermal electrons in direct-drive hydrodynamic modeling [16].

In this Letter, we use new, reduced LPI models inline in a rad-hydro code to study the interplay of LPI and hydrodynamics. We find significant impacts on plasma dynamics and hohlraum irradiation symmetry. Namely, LPI-driven plasma waves modify plasma conditions and alter CBET in high-fill-density NIF experiments, where CBET can roughly double the inner-beam power and inner-beam SRS can exceed half the incident power. Unlike prior work, CBET and SRS are modeled together and throughout the target volume, with no assumption about where they occur. We show that LW heating reduces CBET to the inner beams so that CBET and SRS must be considered jointly. The SRS light continuously grows as it propagates. LWs are mostly driven just inside the laser entrance hole, which they heat. Compared to a model where the escaping SRS light is simply removed from the incident laser, the inline model increases the electron temperature where inner and outer beams overlap. This produces x rays from the poles rather than equator.

Our findings help explain several discrepancies between NIF data and hohlraum modeling, namely predictions that almost all outer-beam power is transferred to inner beams. X-ray images of wall emission show bright spots corresponding to outer beams, indicating they are not fully depleted [17]. Capsule implosion shape data are close to round or oblate (stronger x-ray drive from the poles), but previous modeling gives a strongly prolate shape.

The inline LPI models quantify the processes sketched in Fig. 1. We treat light waves as plane waves, and solve steady-state coupled-mode equations for intensities I_i along refracted laser rays. We model the plasma-wave response with kinetic linear theory in the strong damping limit (advection of plasma waves neglected vs spatial Landau damping). The SRS model is *post hoc* in that we specify the escaping SRS powers and wavelengths, which are measured on both inner cones and shown for $\theta = 30^\circ$ in Fig. 2. This shows the measured SRS wavelength is close to the wavelength of peak SRS gain exponent [18] found from simulated plasma profiles. The SRS model develops light and Langmuir waves consistent with SRS data and the resulting spatially varying energy deposition.

The 192 NIF beams are grouped into 48 quads of four beams with polarization smoothing (two beams linearly polarized orthogonal to the other two). The inline model for one quad (subscript $X = 0$) propagating to $+z$ is

$$\partial_z I_0 = -\kappa_0 I_0 - \frac{g_R}{\omega_R} I_0 I_R - \sum_{i=1}^{23} \frac{g_{Ci}}{\omega_i} I_0 I_i, \quad (1)$$

$$-\partial_z I_R = -\kappa_R I_R + \frac{g_R}{\omega_0} I_0 I_R, \quad (2)$$

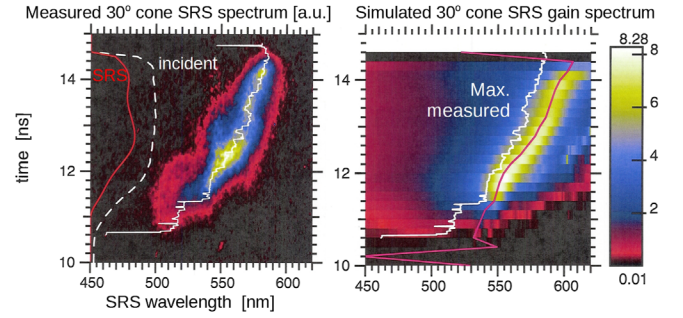


FIG. 2. Left: measured 30° cone SRS spectrum for NIF shot N121130, with cone incident (white) and escaping SRS (red) powers. Right: SRS gain exponent spectrum from Lasnex simulation with inline SRS model (magenta: wavelength of maximum gain).

$$p_L = \frac{\omega_L}{\omega_0 \omega_R} g_R I_0 I_R, \quad (3)$$

$$p_{Ai} = \frac{\omega_{Ai}}{\omega_0 \omega_i} g_{Ci} I_0 I_i = \alpha_i \delta n_{Ai}^2. \quad (4)$$

κ_X is the inverse bremsstrahlung absorption rate of wave X . $X = i \neq 0$ for another quad incident on the same entrance hole, and $X = R$ for quad 0's SRS light wave. For the Langmuir wave ($X = L$), $\vec{k}_L = \vec{k}_0 - \vec{k}_R$, $\omega_L = \omega_0 - \omega_R$, p_L is the power deposition density. The IAW for CBET to quad i ($X = Ai$) is analogous, with $L \rightarrow Ai$, $R \rightarrow i$, and δn_{Ai} the IAW electron density fluctuation amplitude. The CBET coupling rate is

$$g_{Ci} \equiv \frac{\pi r_e}{2m_e c^2} \frac{k_{Ai}^2}{k_0 k_i} (1 + \cos^2 \theta_i) \text{Im} \frac{\chi_e (1 + \chi_i)}{1 + \chi_i + \chi_e}, \quad (5)$$

$$\chi_j \equiv -\frac{1}{2k_{Aj}^2 \lambda_{Dj}^2} Z' \left(\frac{\omega_{Aj} - \vec{k}_{Aj} \cdot \vec{u}}{k_{Aj} v_{Tj} \sqrt{2}} \right). \quad (6)$$

$k_X = |\vec{k}_X|$, $ck_X/\omega_X = [1 - n_e/n_{cr,X}]^{1/2}$, with $n_{cr,X}$ the critical density for light wave X , \vec{u} is the flow velocity, and $r_e \approx 2.82$ fm is the classical electron radius. $\cos \theta_i = \vec{k}_0 \cdot \vec{k}_i / k_0 k_i$ and $(1 + \cos^2 \theta_i)$ applies for two unpolarized lasers. Reference [19] showed this is appropriate for NIF's polarization scheme. χ_j is species j susceptibility, $\chi_l = \sum_{j \in \text{ion}} \chi_j$, $\lambda_{Dj} = (\epsilon_0 T_j / n_j Z_j^2 e^2)^{1/2}$, $v_{Tj} = (T_j / m_j)^{1/2}$, and Z is the plasma dispersion function. g_R is obtained from g_{Ci} , with $\vec{k}_{Ai} \rightarrow \vec{k}_L$, $\omega_{Ai} \rightarrow \omega_L$, $\vec{k}_i \rightarrow \vec{k}_R$, $1 + \chi_l \rightarrow 1$, and $1 + \cos^2 \theta \rightarrow 4$ (i.e., polarization smoothing does not reduce SRS).

Our model's main assumptions are plane-wave light and linear plasma waves in the strong damping limit. The first neglects laser speckle structure, which enhances coupling when gain over a speckle length is ~ 1 . For CBET, Ref. [19] showed the gain per speckle for any pair of quads is $\ll 1$ in NIF hohlraum conditions, and speckle effects can be neglected. A postprocessing version of our CBET model [20], coupled to "high-flux model" hydrodynamics

described below, has been validated against NIF shape data during the early-time picket [21], as well as against peak power when the power or wavelength shifts are not too high [22]. Nonlinear saturation of CBET-driven IAW's can occur when their amplitudes δn_{Ai} exceed the threshold for ion trapping or two-ion wave decay, both roughly $\delta n_{Ai}/n_e \sim 0.01$. We crudely include this by limiting $\delta n_{Ai} = \min[\delta n^{\text{sat}}, (p_{Ai}/\alpha_i)^{1/2}]$; the coupling on the right of Eq. (1) becomes $\min[I_0 I_i, \beta_i (I_0 I_i)^{1/2}]$. Our simulations use $\delta n^{\text{sat}}/n_e = 0.01$, though the calculated CBET with $0.004 \leq \delta n^{\text{sat}}/n_e \leq 0.1$ is roughly the same.

Our SRS model qualitatively captures results of more advanced, e.g., paraxial, simulations [23]. These show that deep in the hohlraum, SRS amplifies thermal noise many orders of magnitude over a few speckle lengths (where SRS may be weakly damped or absolutely unstable). SRS then grows gradually as it transits the hohlraum, where it is strongly damped and the gain per speckle is small. Our reduced model applies here and advances SRS along ray paths in the same direction as the laser. It stops at the “seed point,” where SRS becomes convectively stable (absorption exceeds gain) and calculates an effective seed power P_{seed} , which gives the specified escaping SRS power. We find $P_{\text{seed}} \sim (0.001 - 0.01) \times$ incident inner-beam power P_0 – far above thermal noise $\sim 10^{-9} P_0$ due to Thomson scatter. Our model thus captures most SRS power growth and LW heating since it amplifies P_{seed} by (50–500) times to the escaping SRS power. An improved SRS model may change the seed point or power, but should give similar hydrodynamic effects—especially since thermal conduction (or superthermal electrons even more so) spreads out the heating. More advanced LPI modeling could help explain the P_{seed} we calculate from the measured SRS.

Equations (1)–(6) are implemented in the rad-hydro code Lasnex [24], from which we show results. The code describes a laser by rays which carry power instantly ($c \rightarrow \infty$) along refracted paths. We present axisymmetric 2D simulations, with intensities found on an auxiliary 3D mesh. We use the “high-flux model” for hohlraum simulations [25], with detailed configuration accounting non-LTE atomic physics [26], and Spitzer-Härm electron heat conduction with flux limit $0.15 n_e T_e v_{Te}$.

We simulate NIF shot N121130 to show the effects of LPI on hohlraum dynamics. This was an early shot in the high-adiabat campaign [27]. 1.27 MJ of frequency-tripled 3ω ($\lambda = 351$ nm) laser energy (peak power 350 TW) drove a gold hohlraum filled with 1.45 mg/cm^3 of He, and a plastic capsule with D-He3 gas. Cone wavelengths were chosen to give large CBET to the inner (especially 23.5°) cones: $\lambda_{23} - \lambda_{30} = 0.4 \text{ \AA}$, $\lambda_{30} - \lambda_{\text{outer}} = 2.43 \text{ \AA}$ (at 3ω). The x-ray emission from the imploded hot spot was moderately oblate, with the amplitude of the P_2 Legendre mode -12% of the P_0 mode (average radius), using the contour at 17% peak brightness (a standard shape measure on NIF). The measured backscatter showed significant inner-cone

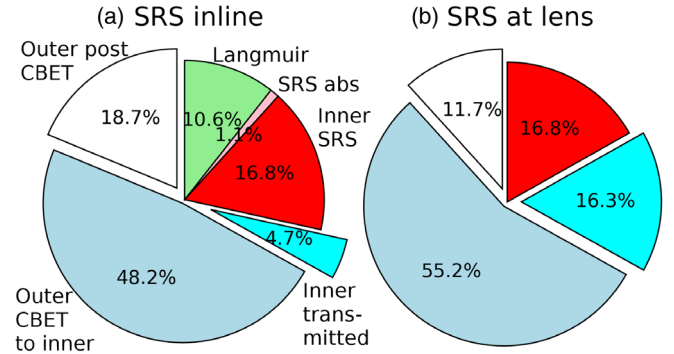


FIG. 3. Energetics of Lasnex simulations with (a) inline SRS model and (b) SRS removed at lens. “Outer post CBET”: incident outer-beam energy not transferred to inners. “Inner transmitted”: incident inner energy minus energy to SRS channels. Inner SRS: escaping inner SRS light. SRS abs: SRS light absorbed. Langmuir: energy to LWs. Energies from 10.5 ns (start of SRS) to 14.8 ns (end of laser pulse), given as percent of incident laser (1120 kJ).

Raman, low inner-cone Brillouin, and low outer-cone Raman and Brillouin.

To isolate the effects of the inline SRS model, we compare two Lasnex simulations with the inline CBET model. One uses the inline SRS model. In the other, the escaping SRS light is removed from the incident laser, with no LW deposition. This unrealistic “SRS at lens” model is obtained from Eqs. (1)–(6) if $g_R = \delta(\vec{x} = \vec{x}_{\text{lens}})$ and $\omega_R = \omega_0$. The second condition means no energy is deposited to the zero-frequency LW: the same laser energy drives both simulations [28]. Figure 3 gives the energetics. The post-CBET energy on the outers is 60% higher with the inline-SRS than SRS-at-lens model, while the post-LPI energy on the inners = inner transmitted + outer CBET to inner is (52.9, 71.5)% with the (SRS inline, SRS at lens) models. This is reflected in the synthetic image in Fig. 4 of 3–5 keV x rays from the entrance hole. The bright (upper, lower) bands originate from the (outer, inner) beam spots on the hohlraum wall.

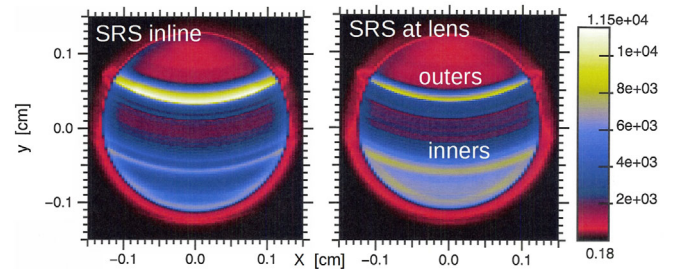


FIG. 4. Synthetic x-ray images for Lasnex simulations with inline SRS model (left) and SRS at lens model (right). Images are symmetrized in azimuth like the simulations. Reduced CBET to inner beams with the inline SRS model gives brighter outer-beam spots. Detector in NIF lower hemisphere 19° to hohlraum axis. X-ray emission integrated over all time and energies 3 to 5 keV. y is roughly parallel to hohlraum axis.

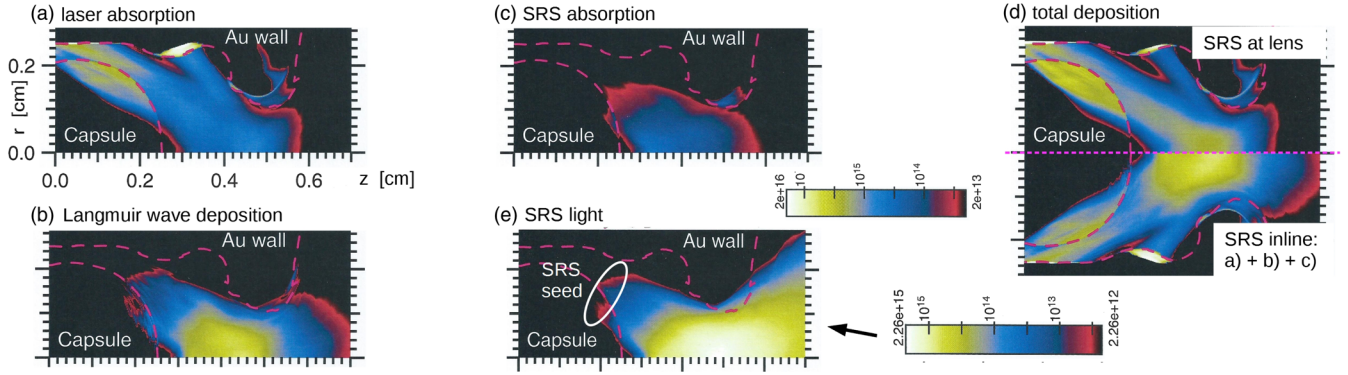


FIG. 5. Spatial profiles of power densities [W/cm^3] from Lasnex simulations at 12.6 ns (time of peak escaping SRS). All panels are from SRS-inline model, except top of (d), which is from SRS-at-lens model. (a) laser absorption, (b) LW deposition, (c) SRS light absorption, (d) total deposition in SRS-at-lens model (top) and SRS-inline model (bottom). (e) SRS light power density, white ellipse indicates seed points where SRS originates. All panels except (e) use same logarithmic colormap. Dashed magenta contours are helium gas boundaries.

Figure 5 depicts spatial power deposition following the CBET and SRS processes. LW heating is much stronger than SRS absorption, and occurs mostly just inside the entrance hole. Panel (d) gives the total heating with the SRS-inline model [sum of panels (a), (b), and (c)] and the SRS-at-lens model (just due to laser absorption). The SRS-inline model has more heating in the entrance hole and outer-beam spots and less in the inner-beam path. Panel (e) shows the SRS power keeps growing until exiting the hohlraum; i.e., the SRS gain rate $g_R I_0 / \omega_0$ dominates the absorption rate κ_R . SRS originates from the “seed” region indicated by the circled red color level.

The different heating profiles lead to higher entrance hole electron temperature with the inline-SRS model, as shown in Fig. 6, which reduces CBET to the inners. Recall that in the off-resonant regime, where $v_{Tj} \gg \omega_{Ai}/k_{Ai}$ and which is generally appropriate for NIF hohlraums, the CBET coupling decreases with $T_e: g_{Ci} \gg (\lambda_i - \lambda_0) Z_j n_e T_j^{1/2} / (T_j + Z_j T_e)^2$ [29] for one ion species.

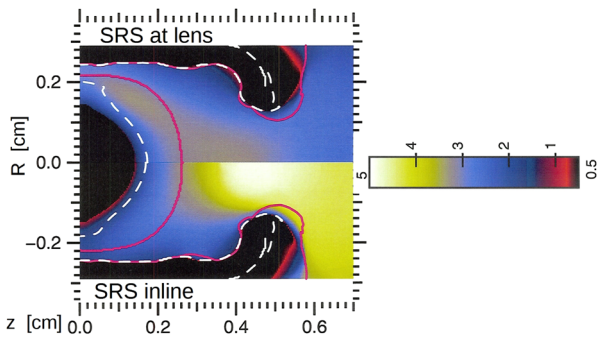


FIG. 6. Electron temperature [keV] at 12.6 ns from Lasnex simulations shown in Fig. 3. $r > 0$ has SRS removed at lens; $r < 0$ uses inline SRS model with LW deposition and is significantly hotter around the entrance hole. Magenta contours are fill gas boundaries as in Fig. 5. White dashed contours are $n_e/n_{cr} = 0.25$.

These results can be compared to planned electron-temperature measurements or direct Thomson scatter measurement of LWs in the entrance hole.

The net impact of LPI on symmetry of the x-ray drive is shown in Fig. 7. The SRS-inline model (red) gives substantially less equatorial drive than the SRS-at-lens model (black). A third simulation (blue) separates the effect of reduced CBET from LW depletion of the inner beams. We imposed the CBET calculated in the SRS-inline simulation to the incident laser, and removed the escaping SRS from the incident inners. Comparing the black and blue curves shows the equator drive reduction just due to reduced CBET—the SRS is removed from the incident laser in both cases. Comparing the blue and red curves isolates the reduction due to LW depletion—the same power is transferred to the inners in both cases. The two effects are comparable. LW power is effectively outer-beam power for x-ray symmetry since they are driven close to the entrance hole. This is a nontrivial result of the inline SRS

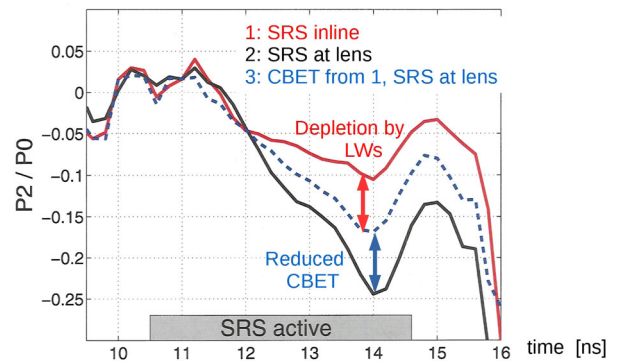


FIG. 7. P_2 moment of x-ray deposition at ablation front, as a fraction of total deposition P_0 , for x-ray energies 0.5–2 keV. $P_2 < 0$ for stronger drive from the equator than the pole. For the inline SRS model, reduced CBET to the inner beams and depletion by LWs both reduce the laser intensity at the equator, which makes P_2 less negative.

model: had the LWs been driven close to the equator wall, they would effectively still be inner-beam power.

To conclude, we have shown a strong effect of laser-plasma interactions on ignition hohlraum plasmas and x-ray drive symmetry. The Langmuir waves driven by inner-beam Raman scatter are produced near the entrance hole, where they significantly increase the electron temperature. This reduces energy transfer to the inner beams. Such interplay of hydrodynamics and LPI requires a self-consistent approach, as presented here. The reduced CBET and LW depletion both reduce the inner beam intensity on, and x-ray drive from, the equator wall. Inline modeling of LPI partially resolves the long-standing overprediction of equator x-ray drive in NIF hohlraums with high gas fill density. Future work could improve our reduced model by comparing to more advanced ones with laser speckles and nonlinear kinetics since direct inclusion of this physics in rad-hydro modeling will be too expensive for the foreseeable future. Accurate laser-driven ICF modeling requires more work on less energetically dominant LPI processes, such as two-plasmon decay and resonance absorption, that can cause unwanted fuel preheat by energetic electrons. Improved electron transport beyond our simple local model should also be examined.

We thank J. A. Harte and G. B. Zimmerman for Lasnex advice. This work was performed under auspices of the U.S. Department of Energy by LLNL under Contract No. DE-AC52-07NA27344.

*strozzi2@llnl.gov

- [1] N. J. Fisch, *Rev. Mod. Phys.* **59**, 175 (1987).
- [2] M. Porkolab, *Phys. Fluids* **20**, 2058 (1977).
- [3] D. DuBois, D. Russell, P. Cheung, and M. Sulzer, *Phys. Plasmas* **8**, 791 (2001).
- [4] V. M. Malkin, G. Shvets, and N. J. Fisch, *Phys. Rev. Lett.* **82**, 4448 (1999).
- [5] M. J. Edwards *et al.*, *Phys. Plasmas* **20**, 070501 (2013).
- [6] P. Michel *et al.*, *Phys. Rev. Lett.* **102**, 025004 (2009).
- [7] W. L. Kruer, S. C. Wilks, B. B. Afeyan, and R. K. Kirkwood, *Phys. Plasmas* **3**, 382 (1996).
- [8] We do not consider two-plasmon decay, which occurs near $n_e/n_{cr} = 0.25$ (see Fig. 6) and is thus independent of the LPI processes discussed here.
- [9] R. L. Berger, C. H. Still, E. A. Williams, and A. B. Langdon, *Phys. Plasmas* **5**, 4337 (1998).
- [10] C. K. Birdsall and A. B. Langdon, *Plasma Physics via Computer Simulation* (Taylor & Francis Group, New York, NY, 2005).
- [11] S. H. Glenzer *et al.*, *Nat. Phys.* **3**, 716 (2007).
- [12] D. Marion, A. Debayle, P.-E. Masson-Laborde, P. Loiseau, and M. Casanova, *Phys. Plasmas* **23**, 052705 (2016).
- [13] I. Igumenshchev, D. Edgell, V. Goncharov, J. Delettrez, A. Maximov, J. Myatt, W. Seka, A. Shvydky, S. Skupsky, and C. Stoeckl, *Phys. Plasmas* **17**, 122708 (2010).
- [14] J. Marozas, T. Collins, P. McKenty, and J. Zuegel, *Bull. Am. Phys. Soc.* **60** (2015).
- [15] A. Colaitis, G. Duchateau, X. Ribeyre, and V. Tikhonchuk, *Phys. Rev. E* **91**, 013102 (2015).
- [16] A. Colaitis, G. Duchateau, X. Ribeyre, Y. Maheut, G. Boutoux, L. Antonelli, P. Nicolai, D. Batani, and V. Tikhonchuk, *Phys. Rev. E* **92**, 041101 (2015).
- [17] M. B. Schneider *et al.*, *Rev. Sci. Instrum.* **83**, 10E525 (2012).
- [18] D. J. Strozzi, E. A. Williams, D. E. Hinkel, D. H. Froula, R. A. London, and D. A. Callahan, *Phys. Plasmas* **15**, 102703 (2008).
- [19] P. Michel *et al.*, *Phys. Plasmas* **16**, 042702 (2009).
- [20] P. Michel *et al.*, *Phys. Plasmas* **17**, 056305 (2010).
- [21] E. Dewald *et al.*, *Phys. Rev. Lett.* **111**, 235001 (2013).
- [22] P. Michel *et al.*, *Phys. Rev. E* **83**, 046409 (2011).
- [23] D. E. Hinkel, M. D. Rosen, E. A. Williams, A. B. Langdon, C. H. Still, D. A. Callahan, J. D. Moody, P. A. Michel, R. P. J. Town, R. A. London, and S. H. Langer, *Phys. Plasmas* **18**, 056312 (2011).
- [24] G. Zimmerman and W. L. Kruer, *Comments Plasma Phys. Control. Fusion* **2**, 85 (1975).
- [25] M. Rosen, H. Scott, D. Hinkel, E. Williams, D. Callahan, R. Town, L. Divol, P. Michel, W. Kruer, L. Suter, R. London, J. Harte, and G. Zimmerman, *High Energy Density Phys.* **7**, 180 (2011).
- [26] H. Scott and S. Hansen, *High Energy Density Phys.* **6**, 39 (2010).
- [27] O. A. Hurricane *et al.*, *Nature (London)* **506**, 343 (2014).
- [28] Total x-ray drive in the two simulations is very close: the peak radiation temperature on the capsule is (284.7, 286.7) eV in the (SRS at lens, inline SRS) simulations and occurs at 14.6 ns in both.
- [29] P. Michel, W. Rozmus, E. A. Williams, L. Divol, R. L. Berger, S. H. Glenzer, and D. A. Callahan, *Phys. Plasmas* **20**, 056308 (2013).